

EWELLIX

A Schaeffler Company

Vertical axis for YASKAWA collaborative robots LIFTKIT-YA-601 and LIFTKIT-YA-630

YASKAWA

PLUG & PLAY KIT



The heritage of innovation

Ewellix is a global innovator and manufacturer of linear motion and actuation solutions. Our state-of-the-art linear solutions are designed to increase machine performance, maximise uptime, reduce maintenance, improve safety and save energy. We engineer solutions for assembly automation, medical equipment, mobile machinery, distribution and a wide range of other industrial applications.

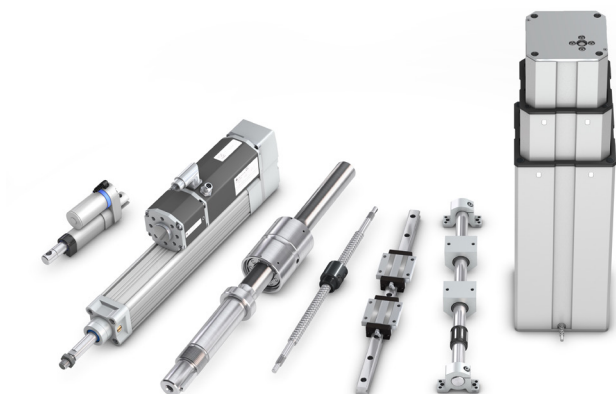
Technology leadership

We earned our reputation through decades of engineering excellence. Our journey began over 50 years ago as part of the SKF Group, a leading global technology provider. Our history provided us with the expertise to continuously develop new technologies and use them to create cutting edge products that offer our customers a competitive advantage.

In 2019, we became independent and changed our name to Ewellix. We are proud of our heritage. This gives us a unique foundation on which to build an agile business with engineering excellence and innovation as our core strengths.

Global presence and local support

With our global presence, we are uniquely positioned to deliver standard components and custom-engineered solutions, with full technical and applications support around the world. Our skilled engineers provide total life-cycle support, helping to optimise the design, operation and maintenance of equipment thus improving productivity and reliability while reducing costs. At Ewellix, we don't just provide products; we engineer integrated solutions that help customers realise their ambitions.



Schaeffler Group – We pioneer motion

Ewellix is since 2023 owned by the Schaeffler Group.

As a leading global supplier to the automotive and industrial sectors, the Schaeffler Group has been driving forward groundbreaking inventions and developments in the fields of motion and mobility for over 75 years.

With innovative technologies, products, and services for electric mobility, CO₂-efficient drives, Industry 4.0, digitalization, and renewable energies, the company is a reliable partner for making motion and mobility more efficient, intelligent, and sustainable.

Schaeffler manufactures high-precision components and systems for powertrain and chassis applications as well as rolling and plain bearing solutions for a large number of industrial applications.



Benefits for handling and inspection

Ewellix provides effective solutions to complete vertical adjustment in a smart way with a wide range of “ready to mount” additional linear axis solutions. We designed them for different applications, giving to your robot an extended operation range.

Fully automated pick and place solutions are becoming a new standard with packaging stations.

A standard collaborative robot does not have such a large vertical working range. With the Ewellix LIFTKIT the base of the robot can be lifted or lowered to work at optimal position.

Stacking on pallets starts at floor level, but the stack can be up to 2 m high, and that's where LIFTKIT can increase your packaging station efficiency.

And every time you need a repetitive operation, as end of line quality inspection, our LIFTKIT can guarantee precision and reliability to maximize your results.

Here below an application example in automotive assembly lines, with a custom LIFTKIT vertical axis for ceiling mounting installation.



Linear axis for collaborative robots LIFTKIT-YA-601 and -630

Operating range extension

- Vertical lifting of the cobot by up to 1 400 mm with compact retracted height.
- Robust column design for industrial use, vibration free motion and virtually maintenance free.

Plug-and-play solution

- Hardware interface compatible with HC10, GP4, GP7, GP8, HC20 and HC30 robots.
- Yaskawa approved product
- Software control integrated with Yaskawa plug&play extension for easy motion programming.
- Requires Yaskawa YRC 1000 micro controller.

Cost savings and higher productivity

Cobots combined with Ewellix LIFTKIT provide a cost-effective solution to upgrade an existing assembly shop, moving from a manual handled to a fully automatized line.

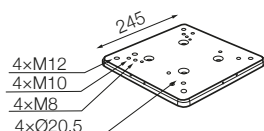
Technical data



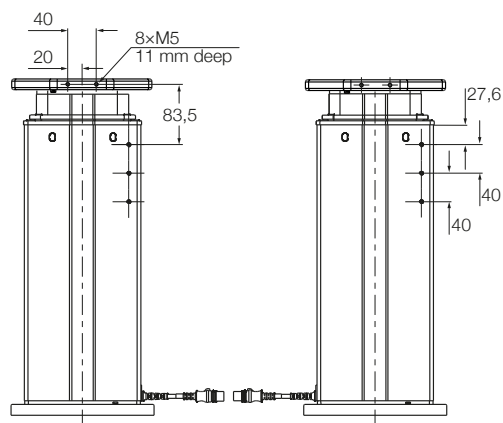
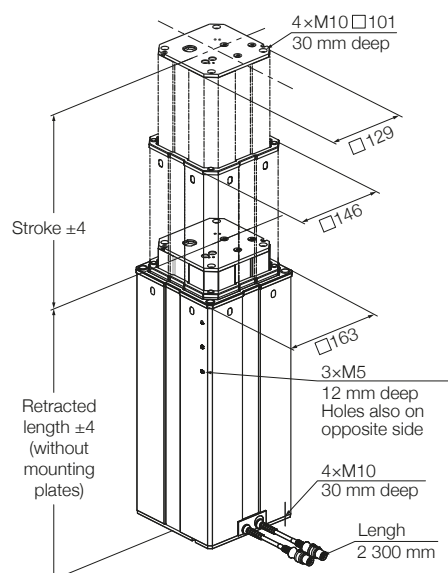
	Unit	LIFTKIT-YA-601	LIFTKIT-YA-630
Column type	-	TLT	TLT
Performance Data			
Max. push load	N	1 500	2 500
Max. pull load	N	0	0
Max. dynamic moment	Nm	210	1 000
Max. static moment	Nm	3 000	7 000
Max. linear speed	mm/s	80	55
Duty cycle	-	10% (20% at 500 N)	10%
Mechanical Data			
Screw type	-	Acme screw	Acme screw
Stroke range	mm	500 - 1 400	500 - 900
Retracted length (only lifting column)	mm	Stroke/2 + 275	Stroke/2 + 275
Weight @ 0 mm stroke	kg	21	105
Δ weight per 500 mm stroke	kg	1,7	5,1
Robots compatibility	-	HC10, GP4, GP7 and GP8	HC20 and HC30
Cable management	-	Threads on column and interface plate to attach cable management	Threads on column and interface plate to attach cable management
Electrical			
Input Voltage/Current	-	120 VAC / 6,5 A 230 VAC / 3,3 A	120 VAC / 6.5 A 230 VAC / 3.3 A
Input frequency	Hz	50-60	50-60
Input Fuse	A	10	10
I/O voltage	-	24 VDC	24 VDC
I/O current	-	max. 10 A not protected	max. 10 A not protected
Emergency stop	-	STO up to PLe, Cat.4	STO up to PLe, Cat.4
Communication			
Control interface	-	YASKAWA YRC 1000 micro	YASKAWA YRC 1000 micro
Positioning, repeatability	mm	± 1	± 1
Accessible positions	-	any	any
Feedback	-	Position & Status	Position & Status
Soft start and stop	-	Implemented for smooth operation	Implemented for smooth operation
Software control	-	YASKAWA Extension	YASKAWA Extension
Environment			
Type of protection	-	IP40	IP40
Ambient temperature	°C	+10 to +40	+10 to +40
Max. humidity	%	85	85
Vibration	-	Stationary industrial environment	Stationary industrial environment

Dimensional drawing LIFTKIT-YA-601 compatible with HC10, GP4, GP7 and GP8

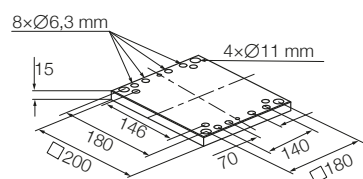
Robot attachment plate



TLT lifting column

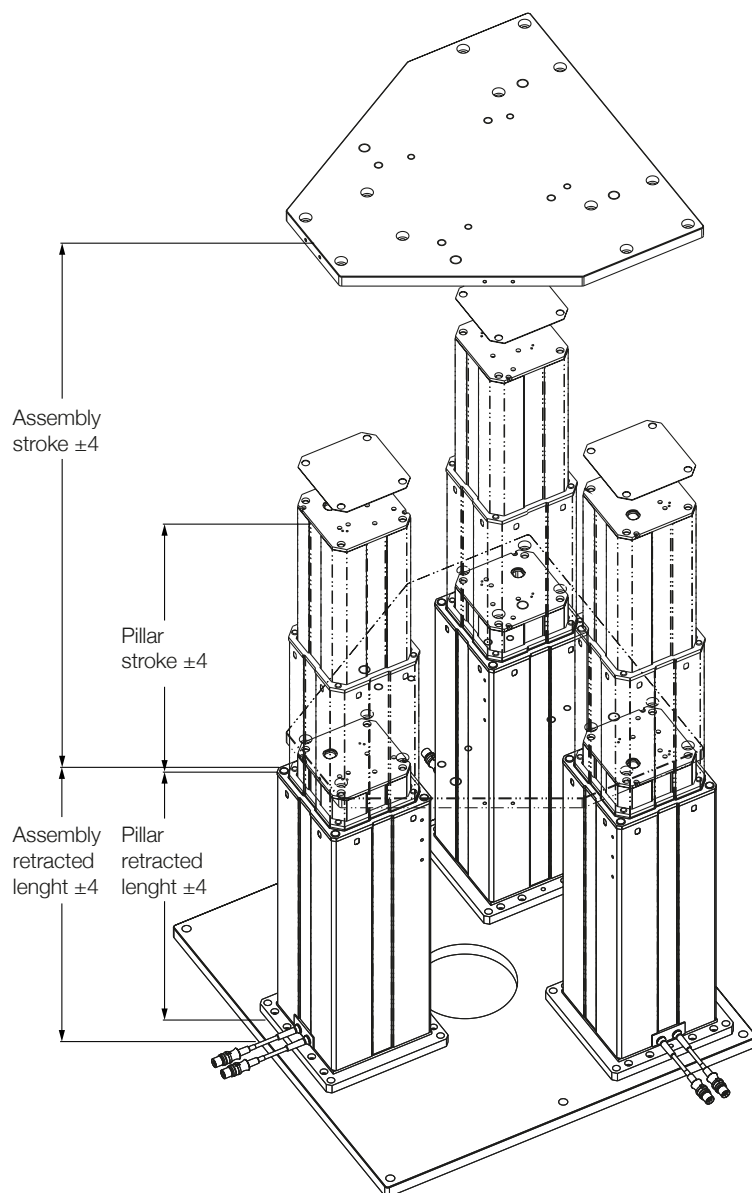


Bottom fixation plate

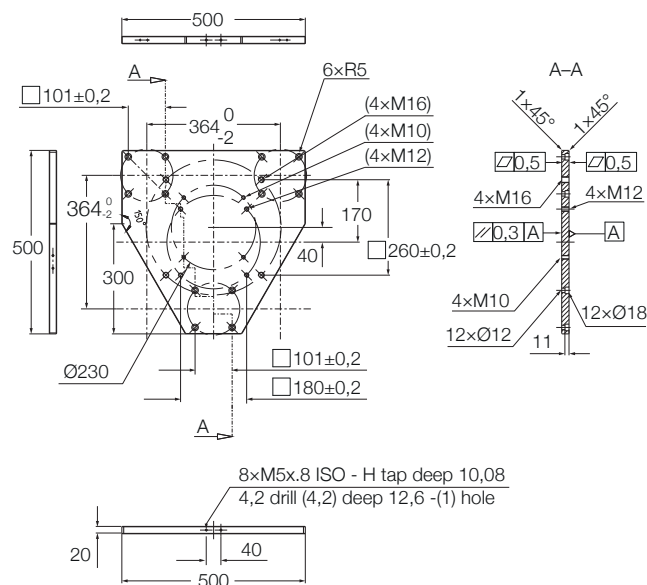


Dimensional drawing LIFTKIT-YA-630 compatible with HC20 and HC30

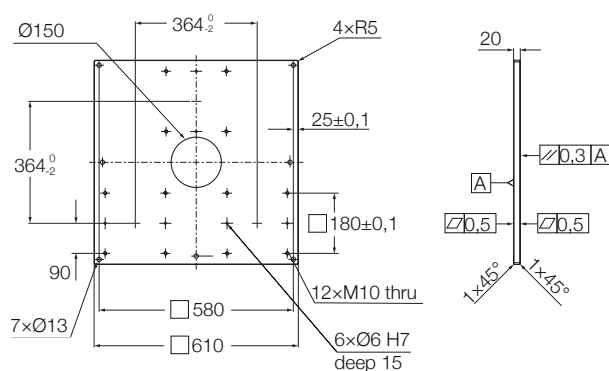
TLT lifting columns



Top mounting plate



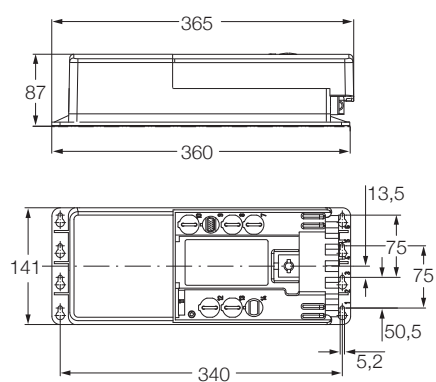
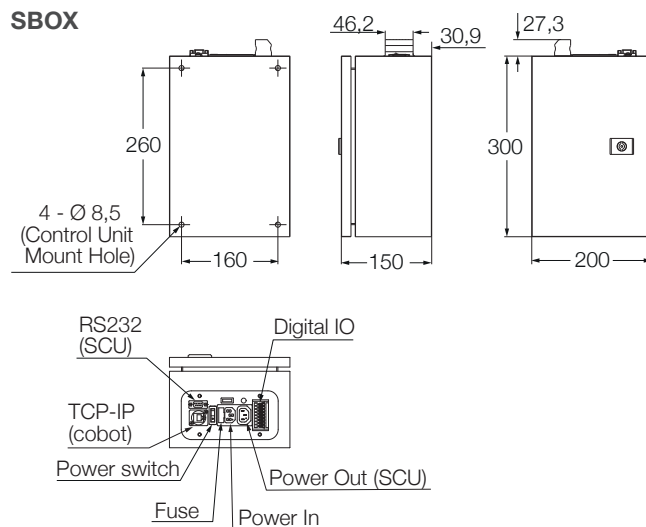
Bottom mounting plate



Stroke [mm]	500	700	900
Retracted length assembly with plates	580	680	780
Lifting column retracted length without plates	525	625	725

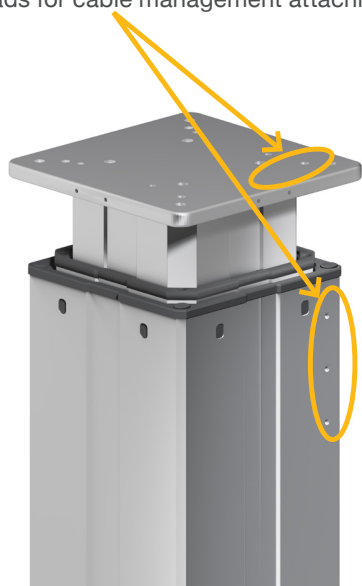
Dimensional drawing

Controller

**SBOX**

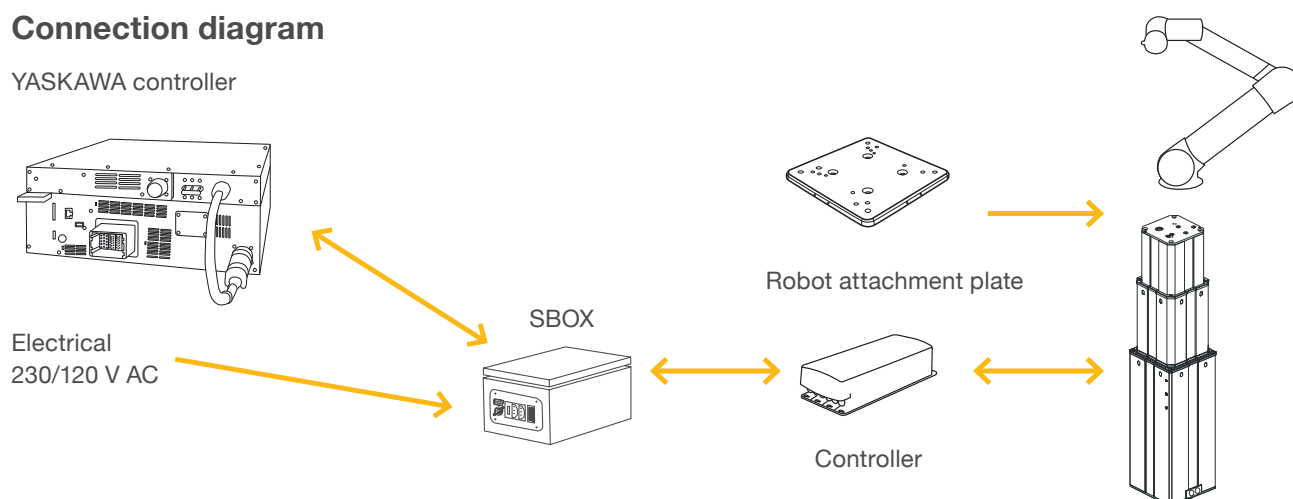
Cable management

Threads for cable management attachments



Connection diagram

YASKAWA controller

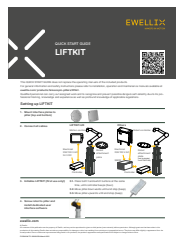


Scope of delivery LIFTKIT-YA-601 version

The following enumerated parts are delivered and are depicted in **figure 1**:

- 1 Lifting column
- 1 Control unit SCU 56/96
- 1 SBOX power cable EU/US/CH/CN
- 1 RS232 interface cable M/0133976
- 1 SCU I/O cable M/0133975
- 1 EHA31 operating handswitch
- 1 YASKAWA robot attachment plate
- 1 bottom mounting plate
- 8 M10x40 screws for mounting plates
- 4 screws M6x20 for YASKAWA robot
- 2 pins Ø 8x20 to align YASKAWA robot
- Quick start guide
- 1 SBOX
- 1 SBOX key
- 1 SBOX I/O safety cable
- 1 SBOX to SCU power cable
- 1 ethernet cable
- SBOX mounting attachments

Figure 1



Quick start guide



SCU Controller



SBOX



Lifting column



Robot attachment plate



Bottom mounting plate



Handswitch



YASKAWA Plug-in included
Teach pendant not included



SBOX Key



SBOX safety
I/O cable



SBOX power
cable



SBOX to controller
power cable



Controller
I/O cable



RS232
cable



Ethernet
cable

Scope of delivery LIFTKIT-YA-630 version

The following enumerated parts are delivered and are depicted in **figure 2**:

- 3 Lifting column
- 1 Control unit SCU 56/96
- 1 SBOX power cable (EU/US/CH/CN)
- 1 RS232 interface cable (M/0133976)
- 1 SCU I/O cable (M/0133975)
- 1 EHA31 operating handswitch
- 1 YASKAWA robot attachment top plate for HC20 and HC30
- 3 bottom mounting plates for pillars
- 1 bottom mounting plate for 3 pillars
- 12 M10x30 bolts for mounting the top plate to the pillars
- bolts for the robot top plate
- 4 M10x45 bolts for fixing the bottom plate to the customer base
- 12 M10x40 bolts for mounting the bottom plate to the pillars
- 4 M16x35 bolts to secure the HC20/30 to the top plate
- 6 fixation pins for alignment
- 12 washers
- 12 M10x30 bolts for fixing the pillars with already mounted plates to the bottom plate
- 5 shimming plates
- 1 Quick start guide
- 1 SBOX
- 1 SBOX key
- 1 SBOX I/O safety cable
- 1 SBOX to SCU power cable
- 1 ethernet cable
- SBOX mounting attachments

Figure 2



Software functionality

The Ewellix LIFTKIT component allows customers to integrate the LIFTKIT capabilities with YASKAWA applications.

Setup & Programming

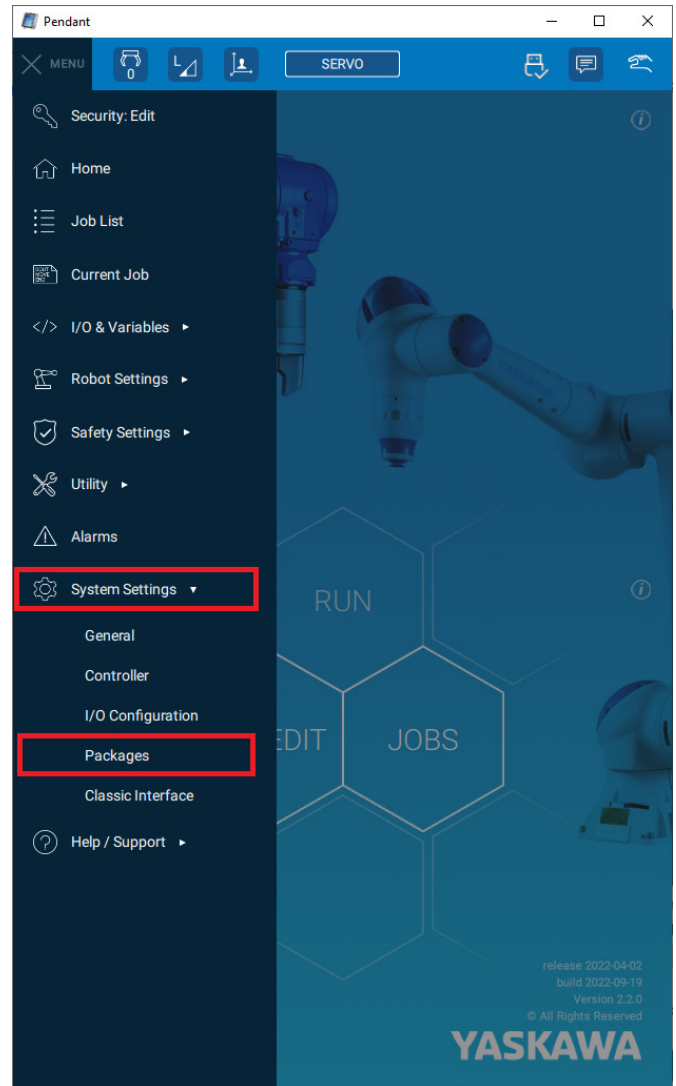
The Ewellix LIFTKIT component allows the set up and control of the LIFTKIT in the YASKAWA Plug&Play. The component can be inserted multiple times throughout a YASKAWA Plug&Play project by calling a multiple LIFTKIT MOVE jobs while getting feedback about current position and status.

Safety elements

The LIFTKIT has a range of safety elements built in to allow its integration into a robot application, including safety relays certified according ISO 13849-1, allowing STO up to PLe, Cat. 4

Software updates

To download the latest software update please check on [ewellix.com/support/media-library -> Software updates -> LIFTKIT](https://ewellix.com/support/media-library->Software%20updates->LIFTKIT).



LIFTKIT software functionalities



Safety warning

When using the LIFTKIT-YA 630 with the HC20 or HC30 the robot should be retracted as much as possible while the Telescopic Lift is in motion due to the limitation of an 840 Nm bending moment during motion. This means the TCP (Tool Center Point) of the robot should be positioned at 1 000 mm from the center lifting column during motion only. The robot can be deployed to any position when the lifting column is not moving.

Ordering key

L I F T K I T - Y A - [] [] - [] [] 0 0 - [] []

Robot

YA YASKAWA

Stroke

	Stroke	Retracted length	Extended length
500 ¹⁾	500 mm	525 mm ²⁾	1 025 mm
600	600 mm	575 mm	1 175 mm
700 ¹⁾	700 mm	625 mm ²⁾	1 325 mm
800	800 mm	675 mm	1 475 mm
900 ¹⁾	900 mm	725 mm ²⁾	1 625 mm
A00	1 000 mm	775 mm	1 775 mm
B00	1 100 mm	825 mm	1 925 mm
C00	1 200 mm	875 mm	2 075 mm
D00	1 300 mm	925 mm	2 225 mm
E00	1 400 mm	975 mm	2 375 mm

Electrical options

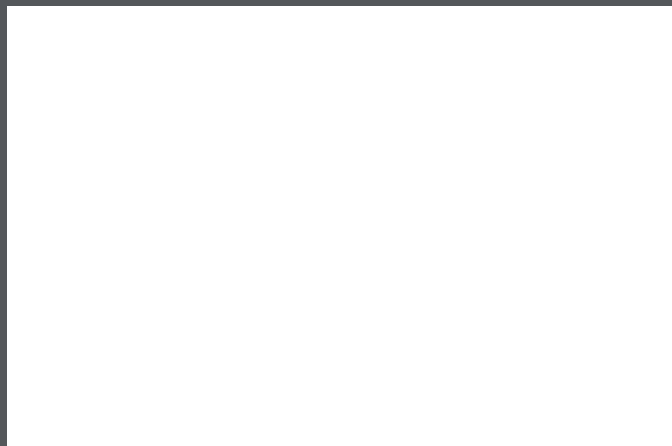
11	120 V AC / US cable
22	230 V AC / EU cable
23	230 V AC / CN cable
24	230 V AC / UK cable
25	230 V AC / CH cable

Column type

601	for YASKAWA cobot HC10, GP4, GP7 and GP8
630	for YASKAWA cobot HC20 and HC30

¹⁾ 630 version is only available in 500, 700, 900 mm stroke; for other stroke please contact Ewellix

²⁾ For version 630 add 55 mm for assembly retracted length with plates



ewellix.com

© Ewellix

All contents of this publication are the property of Ewellix, and may not be reproduced or given to third parties (even extracts) without permission. Although great care has been taken in the production of this catalog, Ewellix does not take any responsibility for damage or other loss resulting from omissions or typographical errors. The photo may differ slightly in appearance from the actual product. Due to continuous improvements being made in our products, the product's appearance and specifications are subject to change without notice.

PUB NUM IL-07039/1-EN-April 2025

Schaeffler and the Schaeffler logo are trademarks of the Schaeffler Group.

YASKAWA and YASKAWA logo are trademark of the YASKAWA Corporation.