

**EWELLIX**

A Schaeffler Company



**Solutions for  
building automation**



# The heritage of innovation

Ewellix is a global innovator and manufacturer of linear motion and actuation solutions. Our state-of-the-art linear solutions are designed to increase machine performance, maximise uptime, reduce maintenance, improve safety and save energy. We engineer solutions for assembly automation, medical equipment, mobile machinery, distribution and a wide range of other industrial applications.

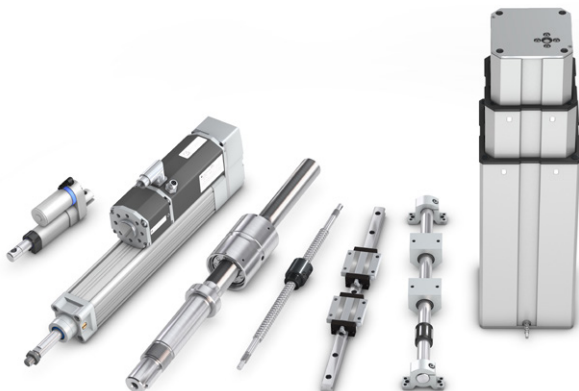
## Technology leadership

We earned our reputation through decades of engineering excellence. Our journey began over 50 years ago as part of the SKF Group, a leading global technology provider. Our history provided us with the expertise to continuously develop new technologies and use them to create cutting edge products that offer our customers a competitive advantage.

In 2019, we became independent and changed our name to Ewellix. We are proud of our heritage. This gives us a unique foundation on which to build an agile business with engineering excellence and innovation as our core strengths.

## Global presence and local support

With our global presence, we are uniquely positioned to deliver standard components and custom-engineered solutions, with full technical and applications support around the world. Our skilled engineers provide total life-cycle support, helping to optimise the design, operation and maintenance of equipment thus improving productivity and reliability while reducing costs. At Ewellix, we don't just provide products; we engineer integrated solutions that help customers realise their ambitions.



## Schaeffler Group – We pioneer motion

Ewellix is since 2023 owned by the Schaeffler Group.

As a leading global supplier to the automotive and industrial sectors, the Schaeffler Group has been driving forward groundbreaking inventions and developments in the fields of motion and mobility for over 75 years.

With innovative technologies, products, and services for electric mobility, CO<sub>2</sub>-efficient drives, Industry 4.0, digitalization, and renewable energies, the company is a reliable partner for making motion and mobility more efficient, intelligent, and sustainable.

Schaeffler manufactures high-precision components and systems for powertrain and chassis applications as well as rolling and plain bearing solutions for a large number of industrial applications.



# Ewellix actuators provide indoor comfort and safety

Thanks to the wide range of electromechanical actuators available, practically all shapes and sizes of windows, doors, shutters, dome lights and blinds can be opened and closed reliably and with millimetre precision.

Modern commercial, administrative, and industrial buildings as well as schools and care centres are often fitted with a variety of small electronic appliances that perform important functions remotely and easily.

Actuators are installed in many modern buildings. These electromechanical actuators open and close traditional and tilt windows, dome lights, facade elements, blinds as well as smoke and heat extraction flaps, at the touch of a button or automatically, using climate sensors (wind/rain) and temperature and smoke sensors.



## Features

- Low noise level
- Maintenance free
- Aesthetic design
- Small and robust
- Selection of voltage versions

## Benefits

- Silent and smooth running
- Economic and cost effective
- Easy to integrate
- Easy to install
- Flexibility in power supply

## Typical applications

- Shadow panels
- Tilt windows
- Ventilation hatches
- Dome lights
- Smoke and heat extractors
- Tilt windows for flat roofs

# Shade panels

The use of shading devices in summer prevents solar radiations from entering the building, while enabling the necessary solar gains in winter, resulting in improved thermal comfort and substantial energy savings. Ewellix electromechanical actuators open and close facade elements at the touch of a button or automatically, using climate sensors (wind/rain) and temperature sensors.

## Ewellix solutions

### Features

- Low noise level
- Back up nut as standard
- Ingress protection IP66 with vent option
- Full system with controls, operating units and accessories
- With position feedback
- Synchronization possibility

### Benefits

- Silent and smooth operation
- High reliability and safety
- Compact and powerful
- Easy to install plug and play system
- Long service life
- Virtually maintenance free



MATRIX

## Linear actuators

	CAHB-2x	CAHB-10	MATRIX
Rated push load	up to 10 000 N	1 500 N	8 000 N
Speed	up to 57 mm/s	up to 45 mm/s	up to 7 mm/s
Stroke	up to 700 mm	up to 700 mm	up to 700 mm
Retracted length	Stroke + 160/235 mm	Stroke + 109 / 143 mm	Stroke + 215 / 280 mm
Static load	20 000 N	2 500 N	8 000 N

# Tilting windows

Ewellix electromechanical actuators are ideal for hard-to-reach openings, such as skylights. Tilt windows can be tilted inwards into the room while the base remains fixed. This ensures good ventilation and a high level of rain protection and security.

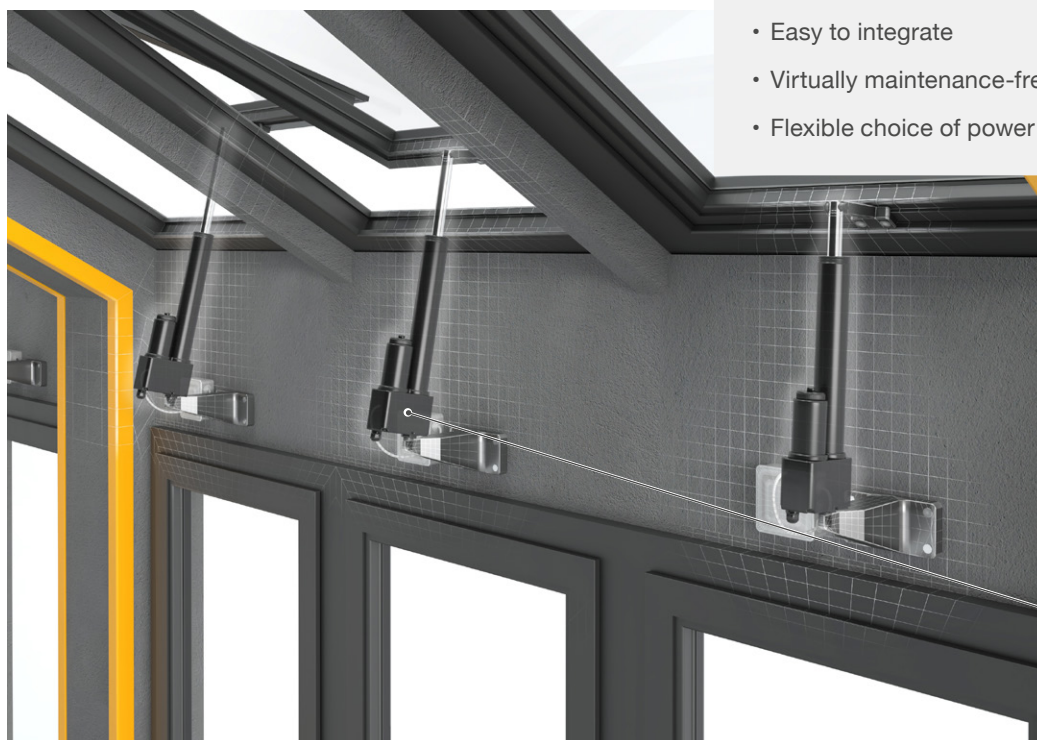
## Ewellix solutions

### Features

- Robust design
- Wide temperature range and corrosion resistant
- Ingress protection IP69K/66M with vent
- Thermal protection
- Designed for harsh environment
- With position feedback
- Various voltage versions

### Benefits

- Compact and powerful
- Cost effective
- Robust and reliable
- Reduced overall set time
- Easy to integrate
- Virtually maintenance-free
- Flexible choice of power supply



CAHB-2x

## Linear actuators

	CAHB-2x	CAHB-10	MATRIX
Rated push load	up to 10 000 N	1 500 N	8 000 N
Speed	up to 57 mm/s	up to 45 mm/s	up to 7 mm/s
Stroke	up to 700 mm	up to 700 mm	up to 700 mm
Retracted length	Stroke + 160/235 mm	Stroke + 109 / 143 mm	Stroke + 215 / 280 mm
Static load	20 000 N	2 500 N	8 000 N

# Ventilation hatches

The use of Ewellix electromechanical actuators in combination with smoke detectors and a battery-powered central control system to manage airflow in modern buildings can help contain fires, improve escape possibilities, and assist firefighting. The benefit of automatically closing the hatch when the system is not in use results in significant energy savings.

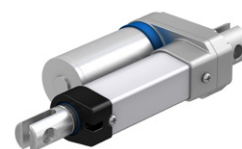
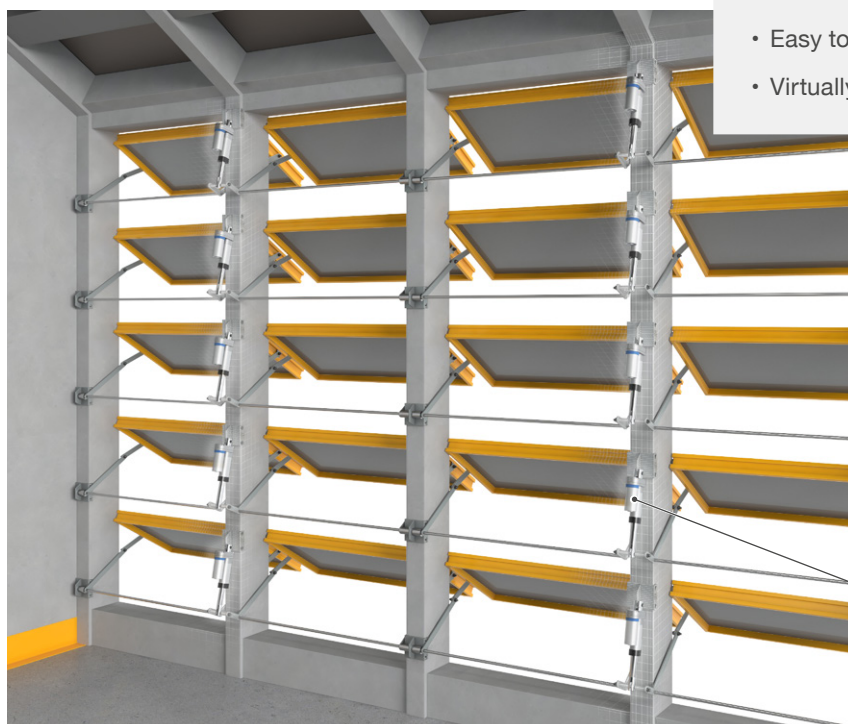
## Ewellix solutions

### Features

- Compact and robust design
- Wide temperature range and corrosion resistant
- Ingress protection IP69K/66M with vent
- Thermal protection
- Designed for harsh environment
- With position feedback

### Benefits

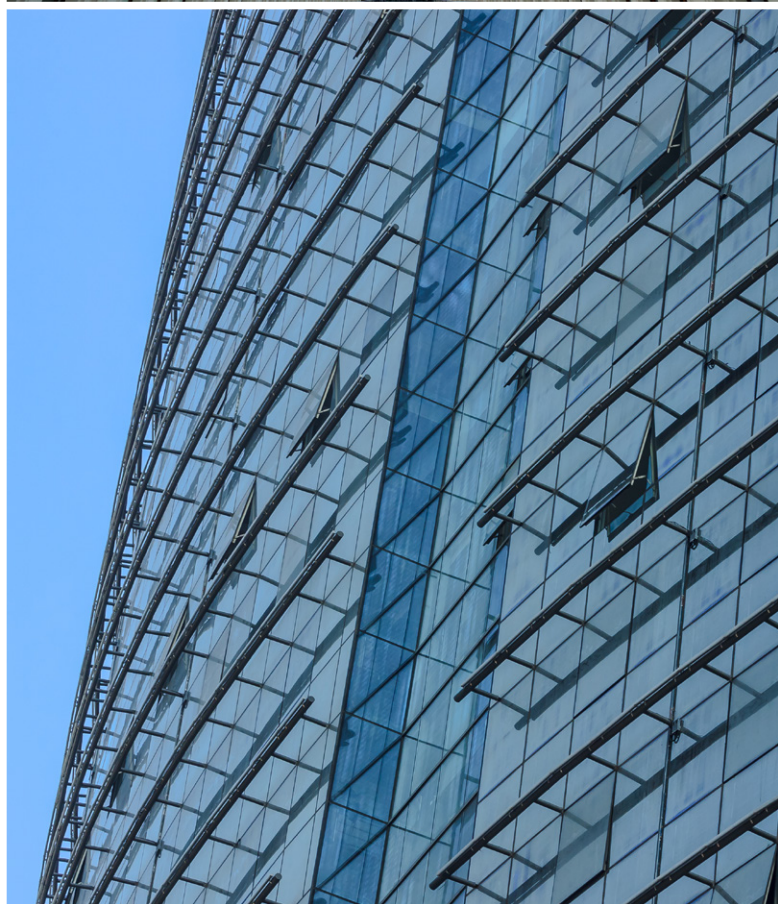
- Small footprint
- Lightweight
- Cost effective
- Reliable operation
- Reduced overall set time
- Easy to integrate
- Virtually maintenance-free



CAHB-10

## Linear actuators

	CAHB-2x	CAHB-10	MATRIX
Rated push load	up to 10 000 N	1 500 N	8 000 N
Speed	up to 57 mm/s	up to 45 mm/s	up to 7 mm/s
Stroke	up to 700 mm	up to 700 mm	up to 700 mm
Retracted length	Stroke + 160/235 mm	Stroke + 109 / 143 mm	Stroke + 215 / 280 mm
Static load	20 000 N	2 500 N	8 000 N

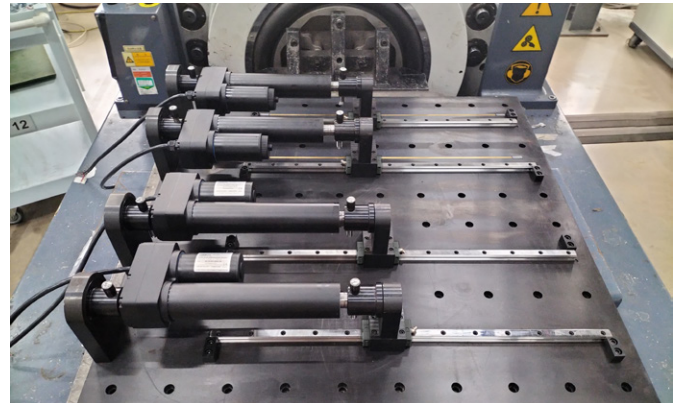


# Tested for your environment

Ewellix's expertise in mechanics and electronics and specific application requirements contribute to the development of electromechanical actuators that meet the requirements of many different applications. We verify our products by a comprehensive test plan that covers all regulatory and environmental requirements.

## Mechanical tests

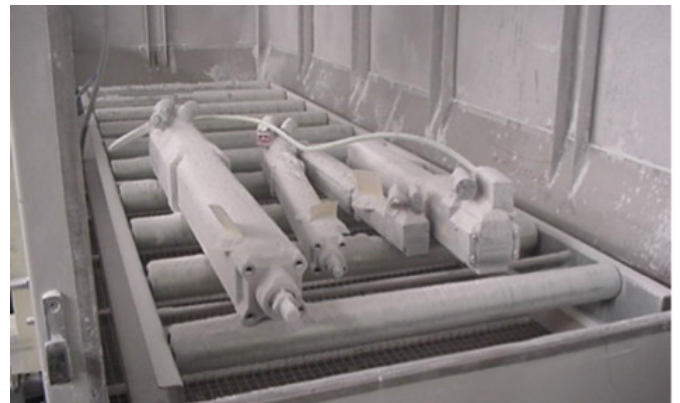
The actuators are tested on different test benches to validate how they withstand vibration and shock on all three axes.



*Vibration test*

## Climatic tests

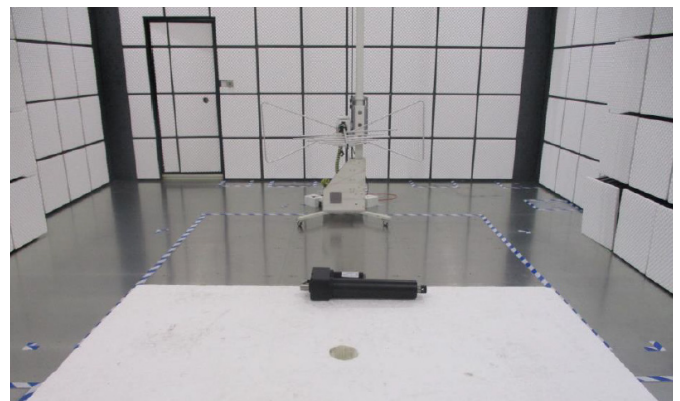
The actuators are tested in a climatic test chamber that reproduces extremely low  $-40^{\circ}\text{C}$  and high temperatures  $+85^{\circ}\text{C}$ , and any possible variations, including humidity and corrosive atmospheres. Doing this ensures that all the functions and performance of the actuators are working as expected.



*Low temperature test*

## Electrical tests

The actuators are tested with different test equipment that reproduces the electrical environment recommended by international standards, such as power supply, immunity to the electrostatic discharges, and electromagnetic compatibility during extreme cases.



*EMC test air immunity or radiation test*



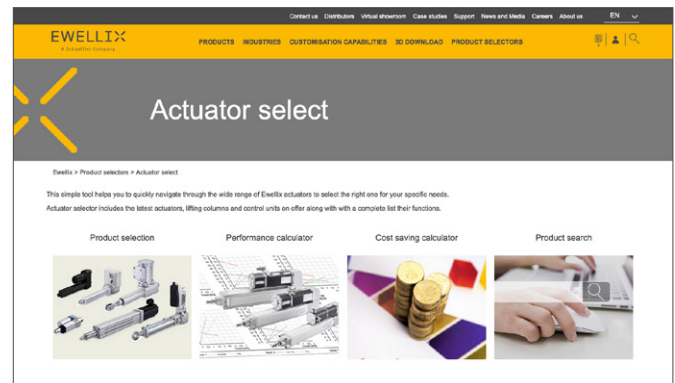
# Supporting tools

## Digital

Ewellix has developed a portfolio of tools to support customers easily select and calculate the right Ewellix product for their application.

### Actuators

- Product selection
- Performance calculator
- Cost saving calculator



## Publications

Supporting documents are available for download on ewellix.com on each product page under the technical data section:

- Operating manual
- Mounting instruction

### Linear actuator CAHB series

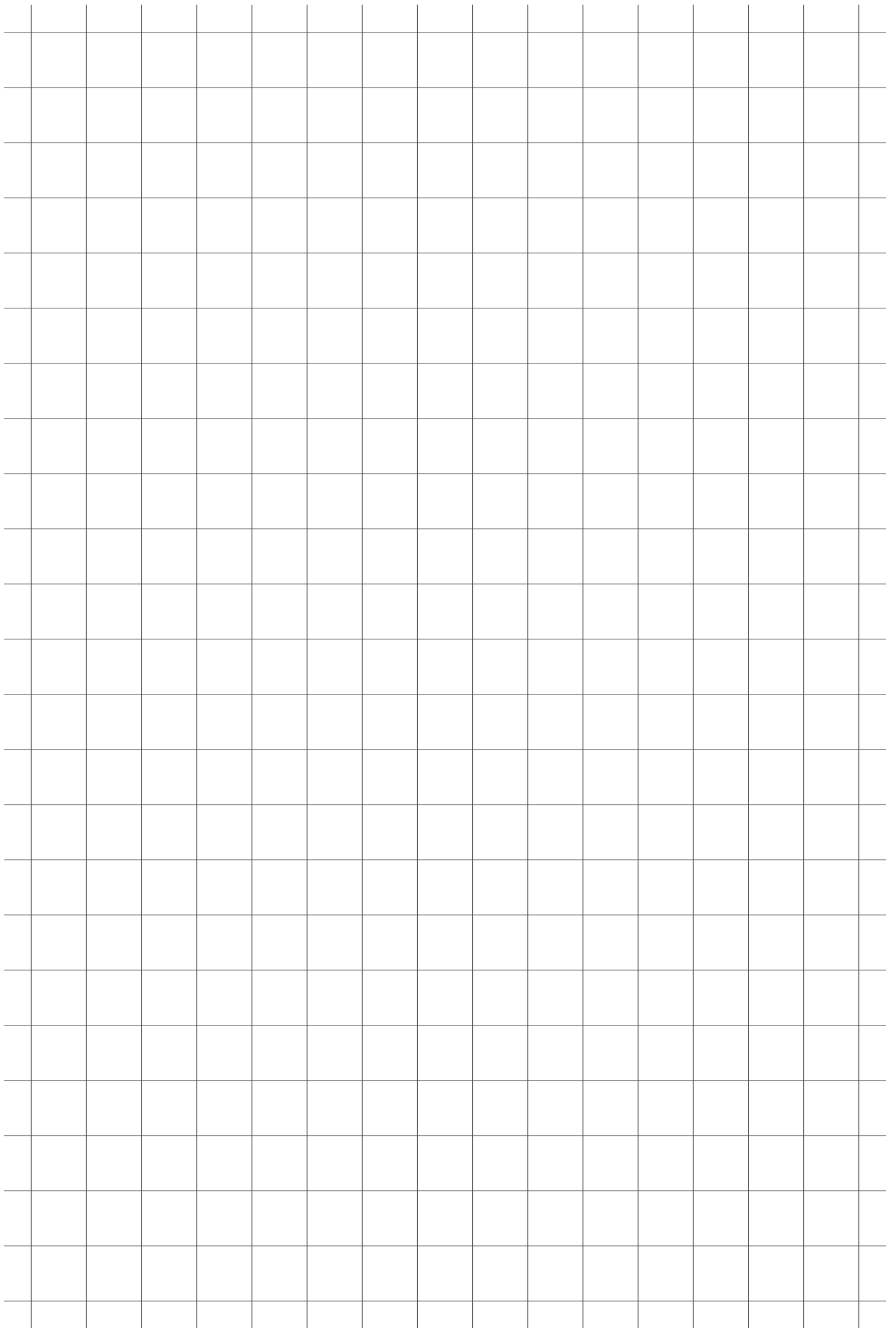
[Click here to open](#)



### Linear actuator Matrix series

[Click here to open](#)









**ewellix.com**

© Ewellix

All contents of this publication are the property of Ewellix, and may not be reproduced or given to third parties (even extracts) without permission. Although great care has been taken in the production of this catalog, Ewellix does not take any responsibility for damage or other loss resulting from omissions or typographical errors. The photo may differ slightly in appearance from the actual product. Due to continuous improvements being made in our products, the product's appearance and specifications are subject to change without notice.

**PUB NUM EL-03021-EN -June 2023**

Certain image(s) used under license from Shutterstock.com.

Schaeffler and the Schaeffler logo are trademarks of the Schaeffler Group.