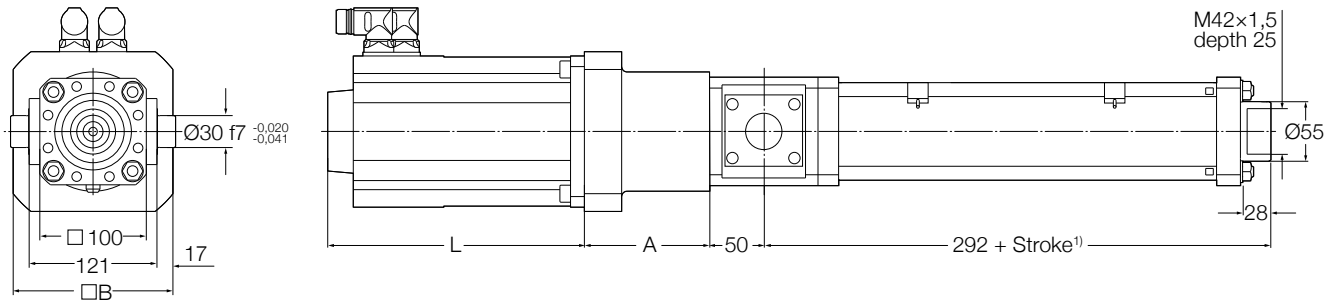


LEMC-S-3010 inline - Dimensional drawing

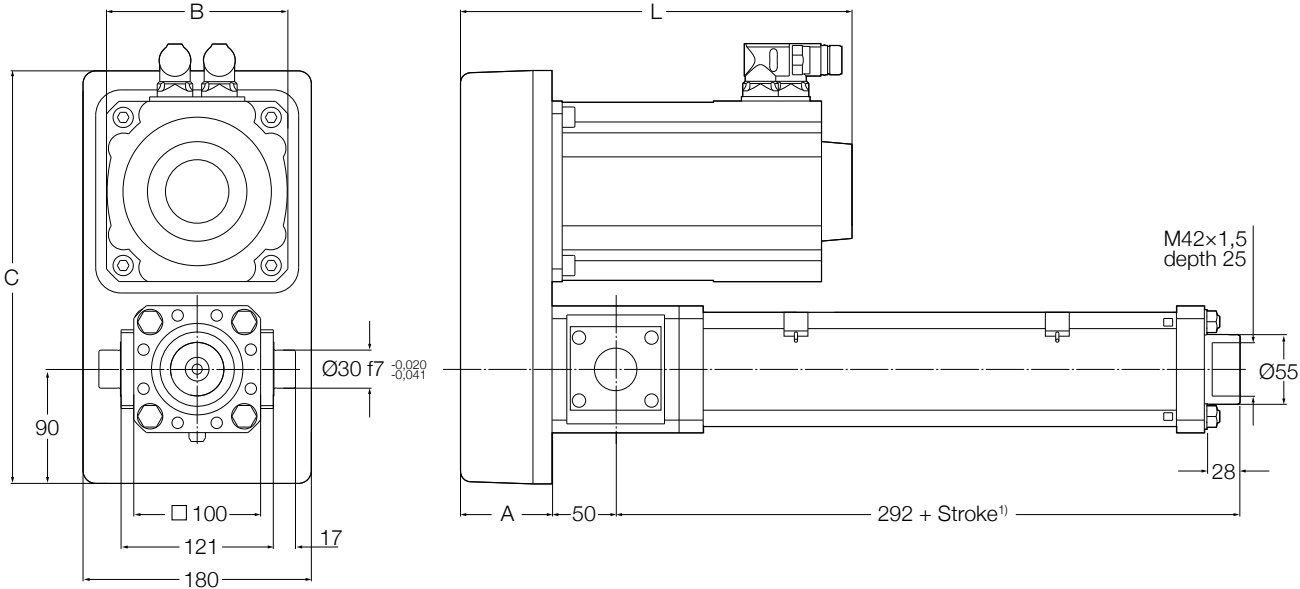


Reference	L ²⁾ mm	A	B
L10LA3	228	106	120
L10LA4	228	106	120
L10LB1	241	113	150
L10LB2	241	113	150
L10LB7	321	113	150
L10LB8	321	113	150

¹⁾ Add 30 mm for anti-rotation option

²⁾ For brake option add 28 mm. For absolute encoder option add 50 mm

LEMC-S-3010 parallel - Dimensional drawing



Reference	L ¹⁾ mm	A	B	C
P20LA1	252	72	116	325
P20LA2	252	72	116	325
P20LA5	332	72	116	325
P20LA6	332	72	116	325
P15LB5	388	72	143	325
P15LC2	338	72	143	325

¹⁾ Add 30 mm for anti-rotation option

²⁾ For brake option add 28 mm. For absolute encoder option add 50 mm