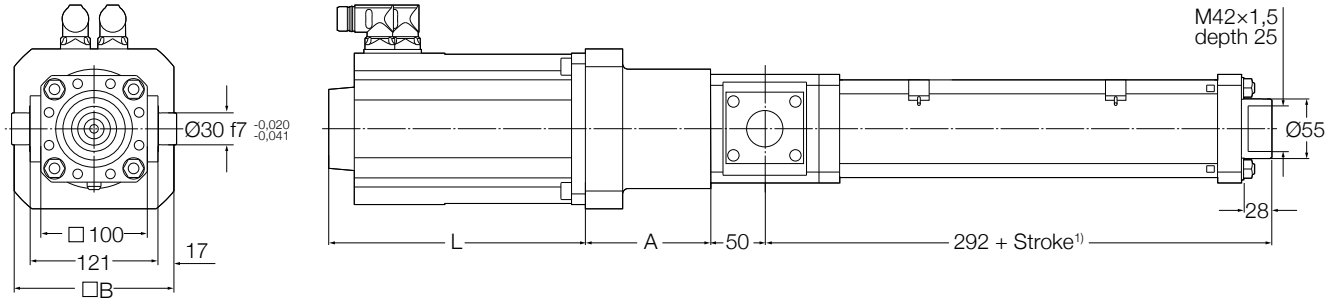


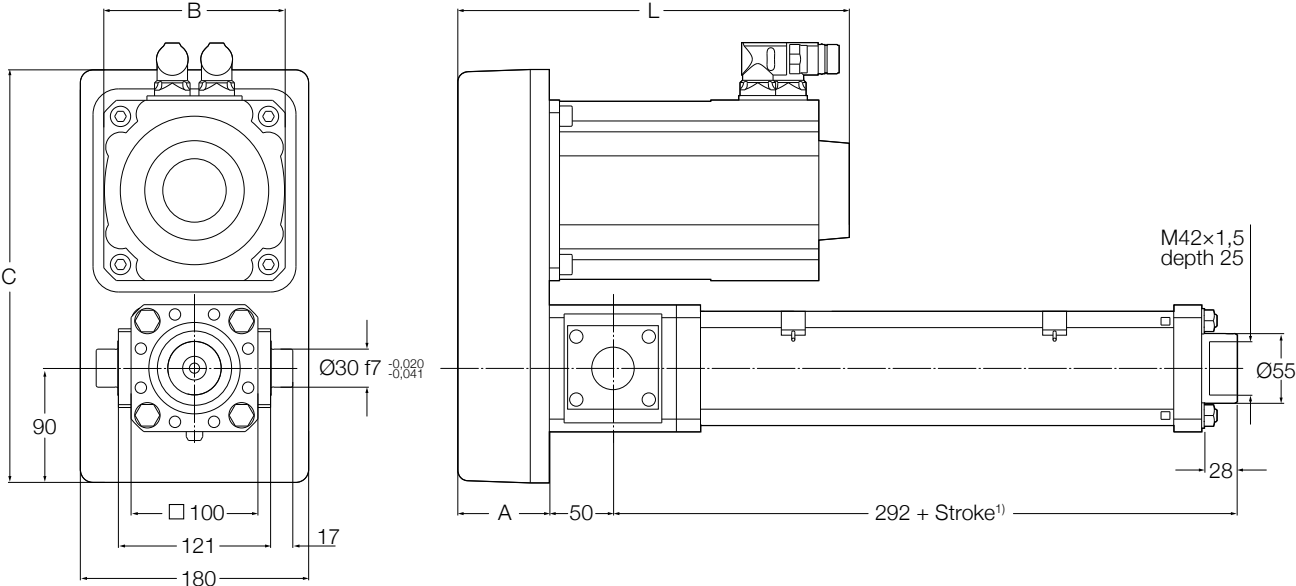
# LEMC-S-3005 inline - Dimensional drawing



Reference	L <sup>1)</sup> mm	A	B
L10LA3	228	106	120
L10LA4	228	106	120
L10LB1	241	113	150
L10LB2	241	113	150
L10LB5	321	113	150
L10LB6	321	113	150

<sup>1)</sup> For brake option add 28 mm. For absolute encoder option add 50 mm

# LEMC-S-3005 parallel - Dimensional drawing



Reference	L <sup>2)</sup> mm	A mm	B mm	C mm
P10LA3	292	72	116	325
P10LA4	292	72	116	325
P15LA5	332	72	116	325
P15LA6	332	72	116	325
P10LB5	388	72	143	325
P10LB6	388	72	143	325

<sup>1)</sup> Add 30 mm for anti-rotation option

<sup>2)</sup> For brake option add 28 mm. For absolute encoder option add 50 mm