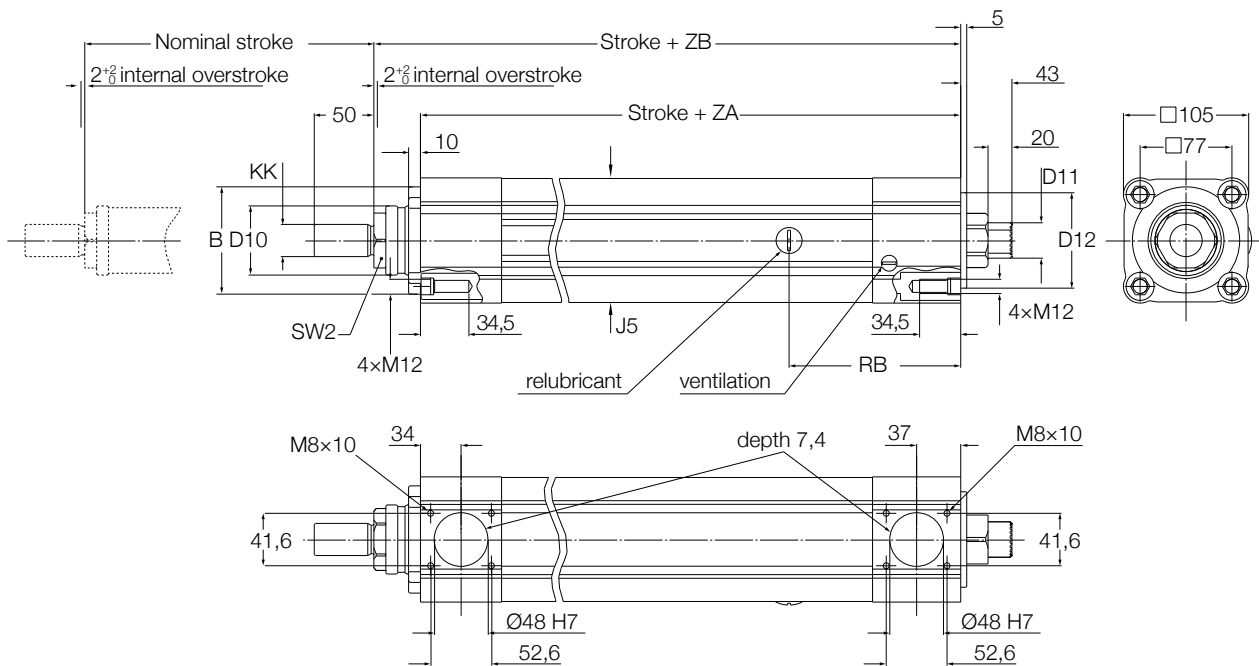
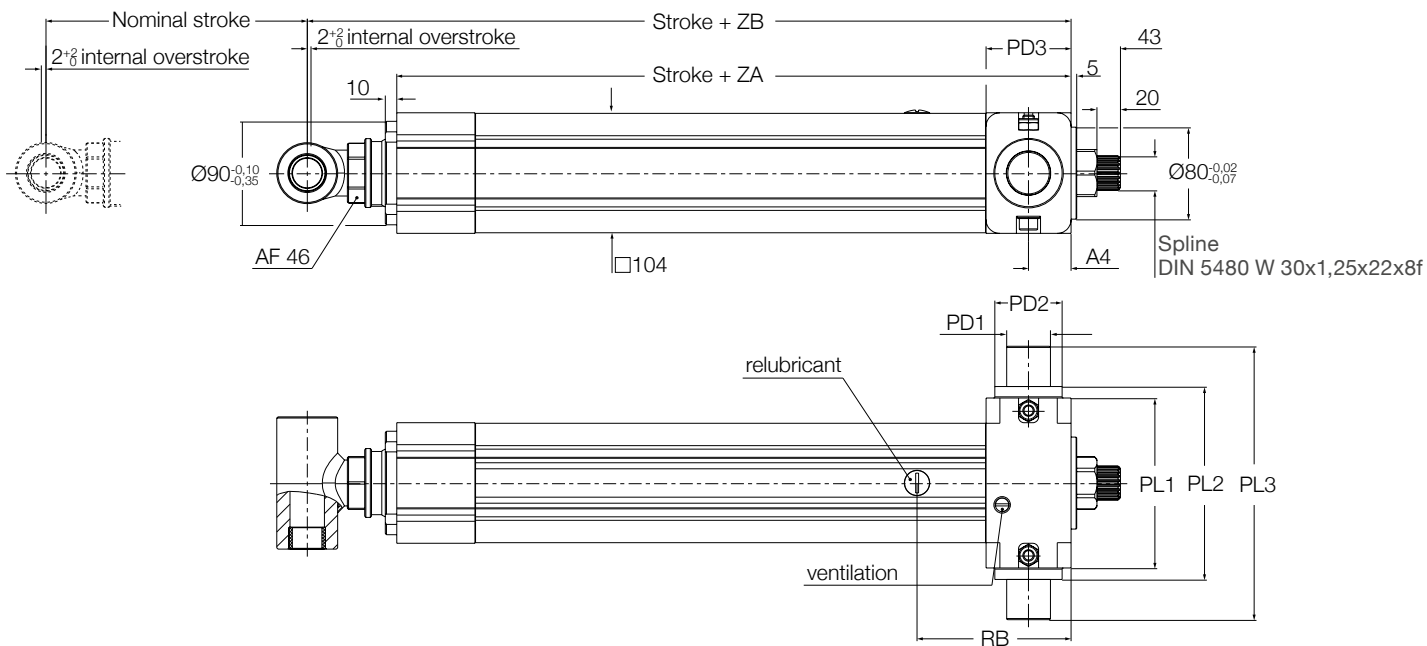


EMA-100 linear unit - Dimensional drawing



Linear Unit	J5	ZA	ZB	B	D10	KK	RB	D12	SW2	D11
-	mm					-	mm		-	-
EMA-100-1-xx-xxxx-A... [Standard version]	□ 104	287±1,5	326±2	Ø90 ^{-0,10} _{-0,35}	Ø58	M27x2	134	Ø80 ^{-0,02} _{-0,07}	AF 46	Spline DIN 5480 W 30x1,25x22x8f
EMA-100-1-CB-xxxx-A... [Ball screw 40x10 with back-up nut]	□ 104	301±1,5	340±2	Ø90 ^{-0,10} _{-0,35}	Ø58	M27x2	148	Ø80 ^{-0,02} _{-0,07}	AF 46	Spline DIN 5480 W 30x1,25x22x8f



Linear Unit	ZA	ZB	RB	PL1	PL2	PL3	PD1	PD2	PD3	A4
-	mm									
EMA-100-1- xx- xxxx-xxxE1xx [High performance pivot housing]	287±1,5	365±2	134	14,8	168	238	Ø38,1	Ø58,5	74	37
EMA-100-1- xx- xxxx-Cxxxxxx [Push tube with T-bar, L 115mm]	287±1,5	365±2	134	-	-	-	-	-	-	-
EMA-100-1- xx- xxxx-Dxxxxxx [Push tube with T-bar, L 155mm]	287±1,5	365±2	134	-	-	-	-	-	-	-
EMA-100-1- CB-xxxx-Cxxxxxx [Ball screw 40x10 with back-up nut with T-bar]	301±1,5	379±2	148	-	-	-	-	-	-	-