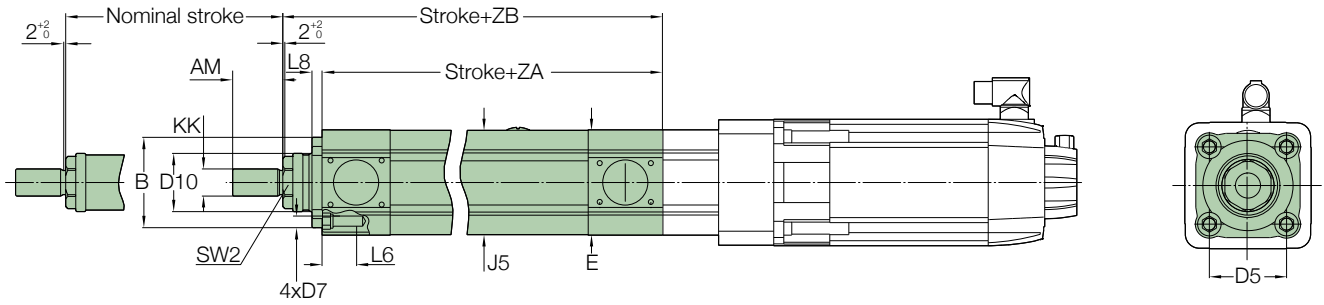
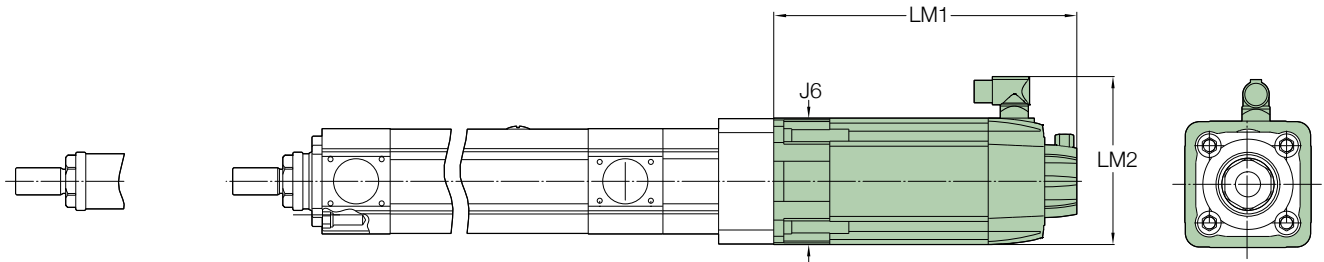


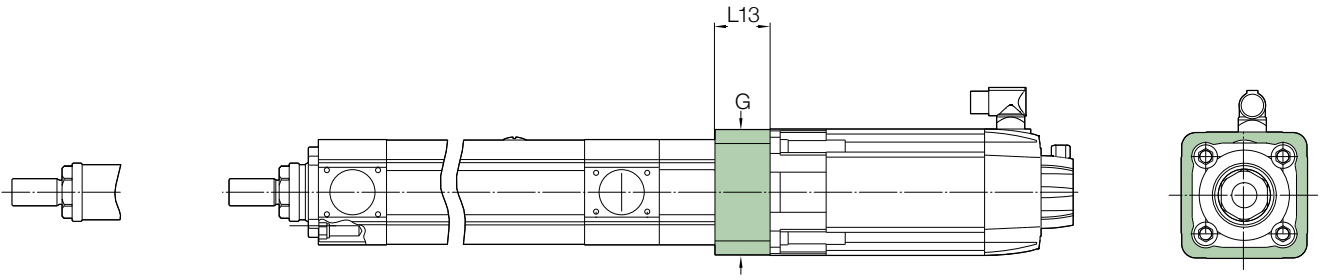
CASM-100 inline - Dimensional drawing



Linear Unit	KK	SW 2	D7	J5	E	ZA	ZB	L8	B	D10	AM	D5	L6	
-	-	-	-	mm										
CASM-100-xx-xxxx-A...	M27 × 2	AF 46	M12	□ 104	□ 105	287±1,5	326±2	10	Ø90	$\begin{smallmatrix} -0,10 \\ -0,35 \end{smallmatrix}$	Ø58	50	□ 77	34,5

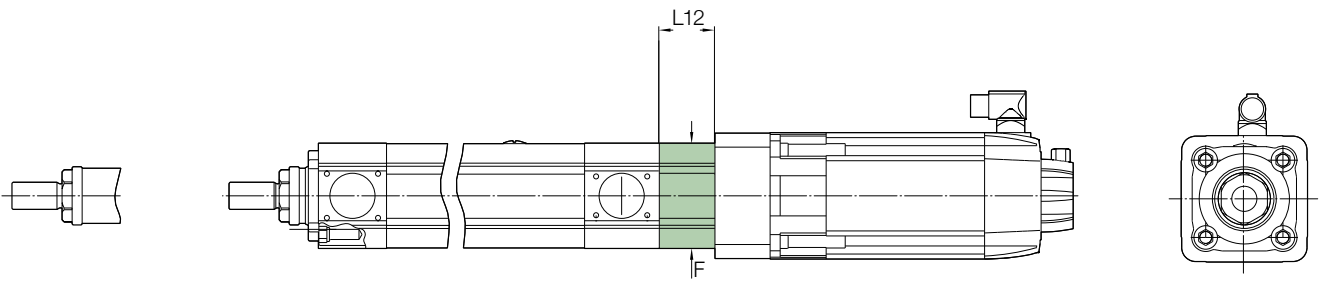


Motor	LM1	LM2	J6
-	mm		
CAM-MS-xO-A11-000	242,5	139,5	□ 96
CAM-MS-xO-A12-000	302,5	167,5	□ 126
CAM-MS-xO-A13-000	309,5	216,5	□ 155
CAM-MS-xO-A14-000	340	253	□ 192



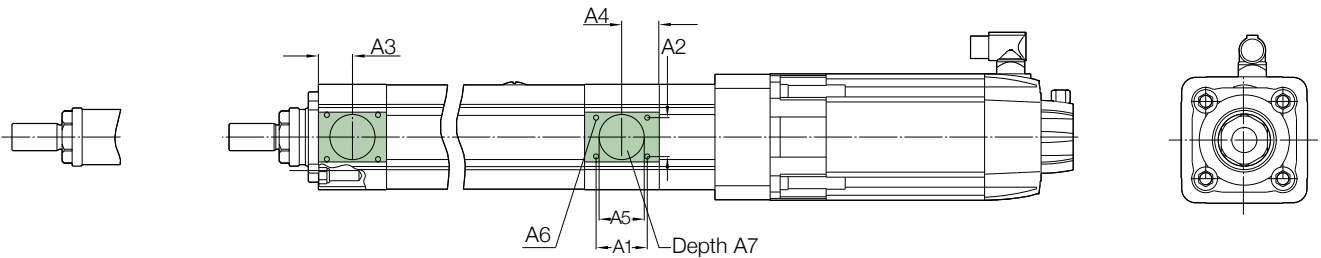
Motor adapter	G	L13
-	mm	

CAM-MS-xO-A11-000	□ 105	44,5
CAM-MS-xO-A12-000	□ 125	54,5
CAM-MS-xO-A13-000	□ 139	62,5
CAM-MS-xO-A14-000	□ 192,5	85,5



Gearbox	i	F	L12
-	-	mm	

CAM-GI-AAA-00-000	01:01	□ 105	55,5
-------------------	-------	-------	------



Optional Mounting Possibility	A6	A1	A2	A3	A4	A5	A7
-------------------------------	----	----	----	----	----	----	----

-	-	mm					
CASM-100-xx-xxxx-...	M8 × 10	52,6	41,6	34	37	Ø48 H7	7,4