

CAXE Limit switch



Adjustable position



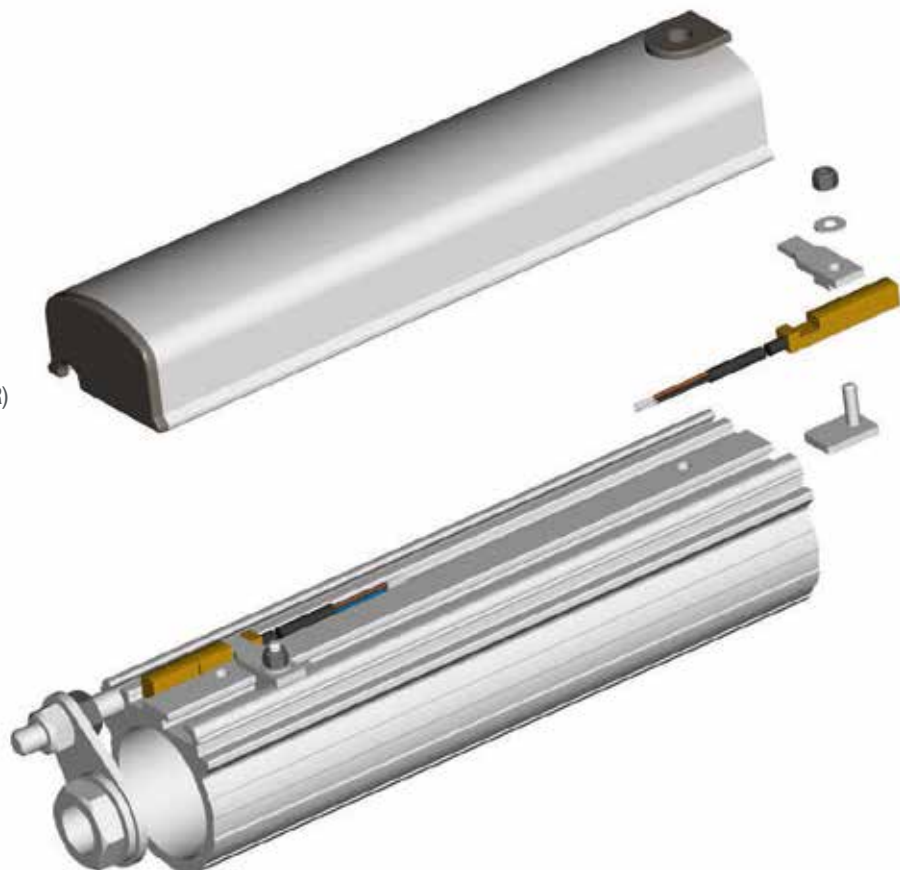
Magnetic sensor



Easy to install



Industrial cable (PUR)



CAXE

CAXE is based on two complementary (NO/NC) reed switches. It is mounted on a special protection tube to indicate actuator end positions. Limit switches combined with Ewellix actuator control units make it possible to set the stroke to any desired length.

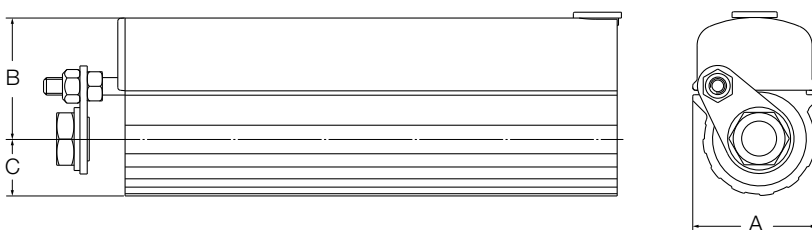
- Robust in terms of tolerance to vibrations and mechanical shock.
- Front attachment G3 must be selected for use with CAXE.
- It is recommended that the limit switch be placed at least 10 mm from the end stop to avoid mechanical failure.

Technical data

CAXE	
Operating voltage	5 to 30 V DC
Max. current	100 mA DC
Protection class	III
Voltage drop	< 5 V
Electrical function	Normally Closed (NC) and Normally Open (NO)
Make/break time	0,3 ms / 0,6 ms
Operating temperature	-20 to +70 °C
Degree of protection	IP 67 (sensor element)
Vibration/shock	According to IEC 60947-5-1 (sensor element)
Cable dimensions (L x D)	2 000 x 3 mm (PUR)
Cable area	3 x 0,14 mm ²

Important! The sensor has no overload protection and no reverse polarity protection.

Dimensional drawing



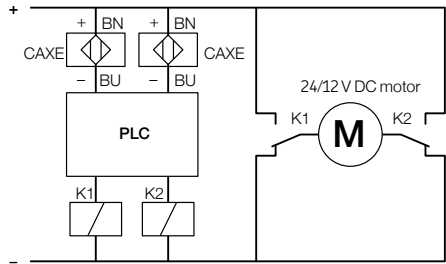
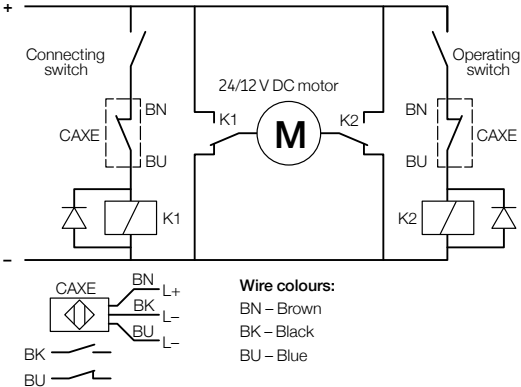
	A	B	C
CAXE 22	42,5	37	14
CAXE 32/32B	47,5	40	20
CAXE 40	46	46	23

Suitable control units

		Control units				
		CAR 22	CAR 32	CAR 40	CAT 32B	CARN 32
CAXE nn¹⁾		• ¹⁾	• ¹⁾	• ¹⁾	• ¹⁾	• ¹⁾

¹⁾ nn, see the ordering key

Connecting diagrams

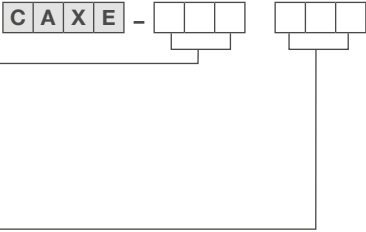


Important! For DC-supply only

Ordering key

Type		
022	CAXE32	CAR 22
032	CAXE32	CAR 32, CARN 32
32B	CAXE32B	CAT 32B
040	CAXE40	CAR 40

Actuators stroke (mm)		
050	050	CAR 22, 32 CARN 32 and CAT 32B
100	100	CAR 22, 32, 40, CARN 32 and CAT 32B
150	150	CAR 22
200	200	CAR 22, 32 CARN 32 and CAT 32B
300	300	CAR 22, 32, 40, CARN 32 and CAT 32B
400	400	CAT 32B
500	500	CAR 32, 40, CARN 32 and CAT 32B
700	700	CAR 32, 40, CARN 32 and CAT 32B





ewellix.com

© Ewellix

All contents of this publication are the property of Ewellix, and may not be reproduced or given to third parties (even extracts) without permission. Although great care has been taken in the production of this catalog, Ewellix does not take any responsibility for damage or other loss resulting from omissions or typographical errors. The photo may differ slightly in appearance from the actual product. Due to continuous improvements being made in our products, the product's appearance and specifications are subject to change without notice.

PUB NUM IL-07025-EN-September 2020