

Linear displacement unit for ophthalmic chairs

Compact, easy-to-fit solution serves a range of Ewellix lifting columns for ophthalmic equipment

Facing a mix of performance and cost demands, ophthalmic equipment manufacturers need linear motion solutions that are easy to implement and easy on the bottom line. The linear displacement unit from Ewellix meets these requirements and more.



Applications

Integrates with several Ewellix lifting columns for:

- Ophthalmic chairs
- Otolaryngology chairs
- Medical treatment chairs

Increase patient comfort

Enabling horizontal adjustments of ophthalmic chairs generally involves some easy-to-move guiding solutions using manual or electrical drives.

The horizontal movement is needed to compensate for different patient dimensions and delivers comfort to both patients and operators.

Today, solutions are often customized to the chair design and involve a lot of components and mounting efforts.

Innovative, integrated design

Offering a cost-efficient contrast, the linear displacement unit from Ewellix is an all-in-one solution that combines an aluminum smart-design housing, four standard linear ball bearings and two hardened, chrome-plated shafts.

Single-source savings

By enabling a one-stop-shopping solution for columns, bearings and housings, the linear displacement unit cuts development time and costs. Fewer parts mean fewer components to source and to assemble.

Robust, flexible functionality

This virtually maintenance-free guide unit is ready to fit a range of Ewellix columns and allows mounting in two orientations. Easy to mount and to adjust, this unit has been validated to support patients weighing up to 250 kg.

Benefits

- Easy to mount and to adjust
- Ready to fit on Ewellix lifting columns in two orientations
- Compact and lightweight
- Low-friction guide for manual displacement
- Safe design, tested for patients weighing up to 250 kg
- Integrated unit with fewer parts and components
- Fulfills medical standards and regulations
- Virtually maintenance-free

The linear displacement unit is a fully integrated solution consisting of:

- Aluminum housing 254 x 200 mm with attachment holes to fit lifting column series CPMA, TFG and TXG
- 4 sealed linear bearings, type LBBR 16-2LS
- 2 hardened, chrome plated precision shafts, 350 mm long, with two M6 mounting holes
- Maximum stroke 150 mm
- Maximum patient weight 250 kg
- Tested with static overload for medical safety
- No need for column adapter plate

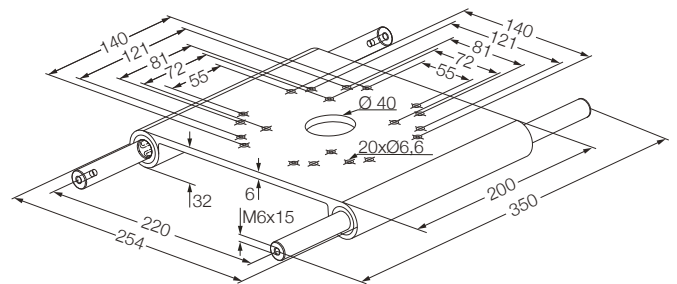
The unit will be attached on one side to the top of the column and on the other side to the chair by fastening the shafts to the structure of the chair.

Upon request, the lengths of shaft and housing can be modified to comply with different dimensional or stroke requirements.

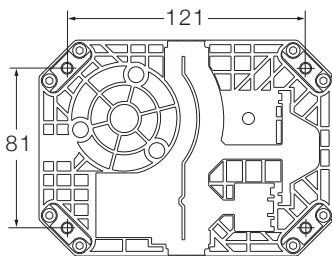
Designation and ordering Key: AHL-1600-200-350



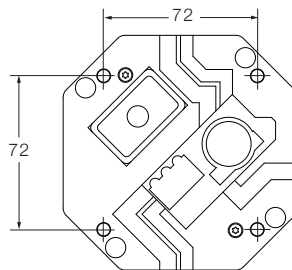
Dimensions (measurements in mm)



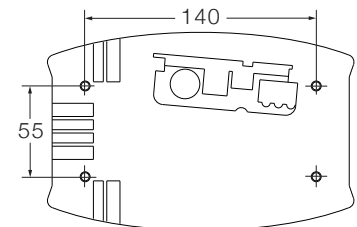
Lifting column CPMA top view



Lifting column TFG top view



Lifting column TXG top view



Ewellix lifting column series for ophthalmic equipment which can be combined with the linear displacement unit AHL-1600-200-350.

ewellix.com

© Ewellix

All contents of this publication are the property of Ewellix, and may not be reproduced or given to third parties (even extracts) without permission. Although great care has been taken in the production of this catalog, Ewellix does not take any responsibility for damage or other loss resulting from omissions or typographical errors. The photo may differ slightly in appearance from the actual product. Due to continuous improvements being made in our products, the product's appearance and specifications are subject to change without notice.